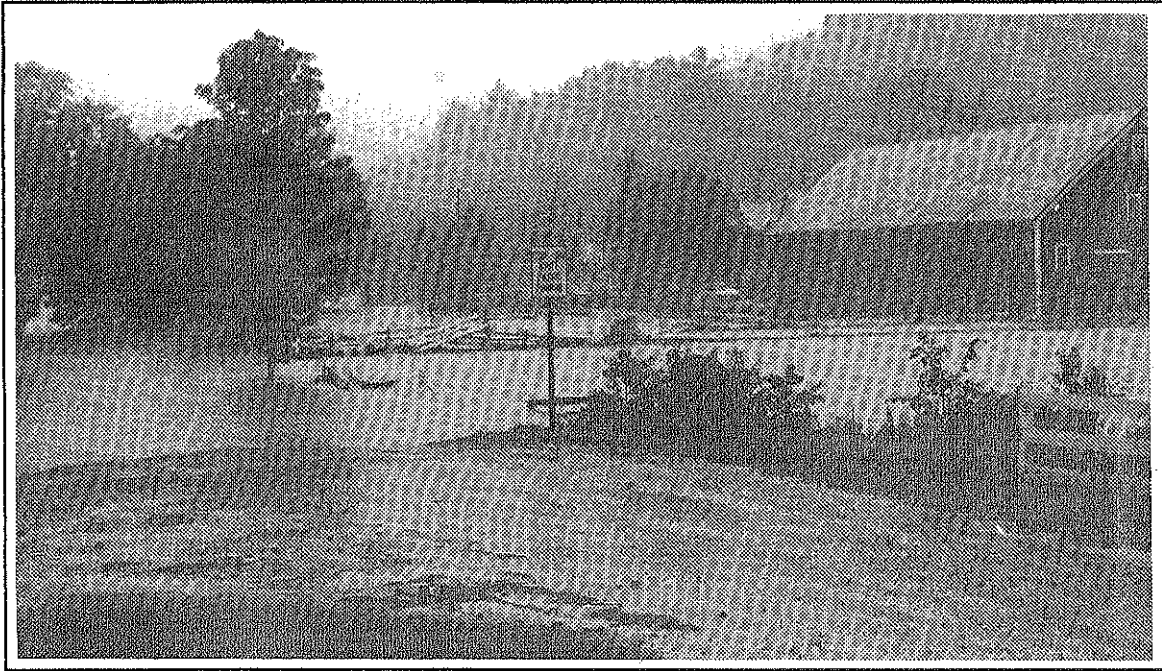


Open and functioning Lareau Farm Country Inn, American Flatbread hit hard



A view of the Lareau Farm Inn field from Route 100 in Waitsfield.

Volunteers from all parts of the Mad River Valley have been arriving and working at Lareau Farm Country Inn and American Flatbread in Waitsfield to help rebuild the two businesses which suffered great damage as a result of the June 27 floods.

About 50 volunteers and personnel from Sugarbush have been on the scene. The floors in the Flatbread have had to be torn up and replaced. The major oven used to bake the popular flatbreads survived the flooding. However, the office, records, electronic equipment, phones and some supplies were destroyed in water which was waist deep. In addition, about 50 cords of wood were lost. Four vehicles, including one owned by a wedding couple staying at the inn were destroyed as was a truck owned by American Flatbread.

At 4:45 a.m. Saturday, dogs on

the property were barking and horses broke out of a paddock and bolted to the upper fields to safety. Two feet of water extended from Route 100 and flooded the outer courtyard of the inn and extended to the wood's edge at the back of the field.

Inn owner Sue Easley had an inn full of guests at the time. With the power still working and the telephones in use, an evacuation by boat was being planned by the Waitsfield Fire Department. However, the water receded by 6:00 a.m. making the evacuation unnecessary.

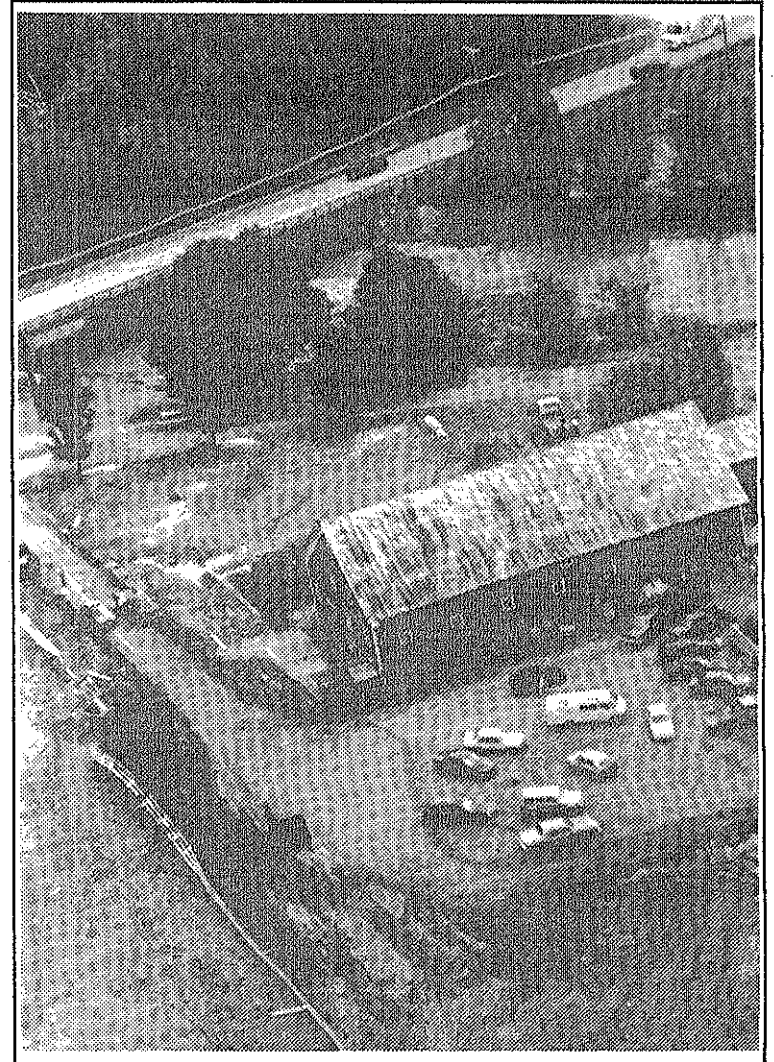
A planned wedding ceremony was carried out on schedule Saturday evening at another location. Now the basement at the inn has been cleared out. A new furnace, a water heater, other equipment and supplies were destroyed.

The Lareau Farm Inn is now back in working order. The water supply has been checked and is O.K.

According to George Schenk of American Flatbread, the land around Lareau Farm acted as a flood plain and absorbed millions of gallons of water which helped reduce the damage. He also said that all of the silt left on the ground after the waters receded will add to the long term viability of the farm land.

In addition to the continuing clean up and restoration for business this Friday evening, Schenk and his team are building a new Flatbread oven for use in Warren Village at the Pitcher Inn Saturday, July 4, during the annual celebration.

Easley and Schenk expressed their thanks and admiration for the efforts of the volunteers and Sugarbush.

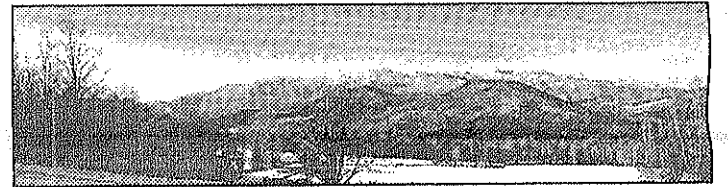


An aerial view of American Flatbread after the flood receded.



Rescue workers from Johnson helped Jeff Allen, Jim Hood and Lara Peterson into a boat near the Sugarbush Access Road. The trio were stranded, Peterson and Hood in a tree for a while, for several hours by the Mad River.

VIEW SPECTACULAR

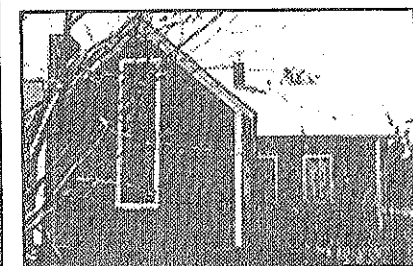


EXQUISITE AND DRAMATIC VIEWS OF SUGARBUSH, Camel's Hump and more. 37.5 acres of rolling pasture and mature woods. This spectacular property will pass muster with the most discriminating buyer. \$395,000.

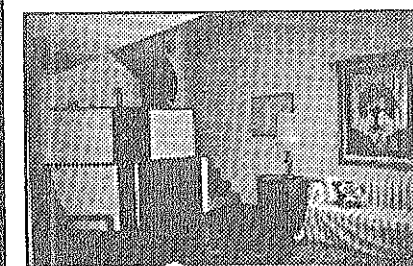


FULLER HILL FARM Designed development at its best! Includes views, privacy and protection. Prime +/- 10.8 acre lot bordered by stately maples. Price of \$175,000 includes septic system, UG power, common land, recreat. path and many extras.

- 4.6+/- Ac. close to ski areas \$295,000
- 1.7+/- Ac. WAITSFIELD building lot \$27,000
- 2+/- Ac. FAYSTON FARMS - direct ski views \$50,000
- 3+/- Ac. ROXBURY RD. wooded views \$52,500
- 2+/- Ac. WARREN - maples, views, permit \$15,000



TERRIFIC BUY - \$99,500
Circa 1880's Cape, 18x15, 1 1/2 story lovingroom, brick fireplace, with wideboard floor, 3 bedrooms. Convenient location for home office. Approx. 1,400', GHA heat.



SUNDOWN - \$109,000
4 SEASON CONDOMINIUM
Three bedroom, 2 bath unit in great location. This small, well managed complex boasts reasonable assoc. fees and is mostly owner occupied. Pool and tennis, hardwood floors in

LR and bedroom offer a more allergy free environment. Furnished and freshly painted

VARE
496-2506