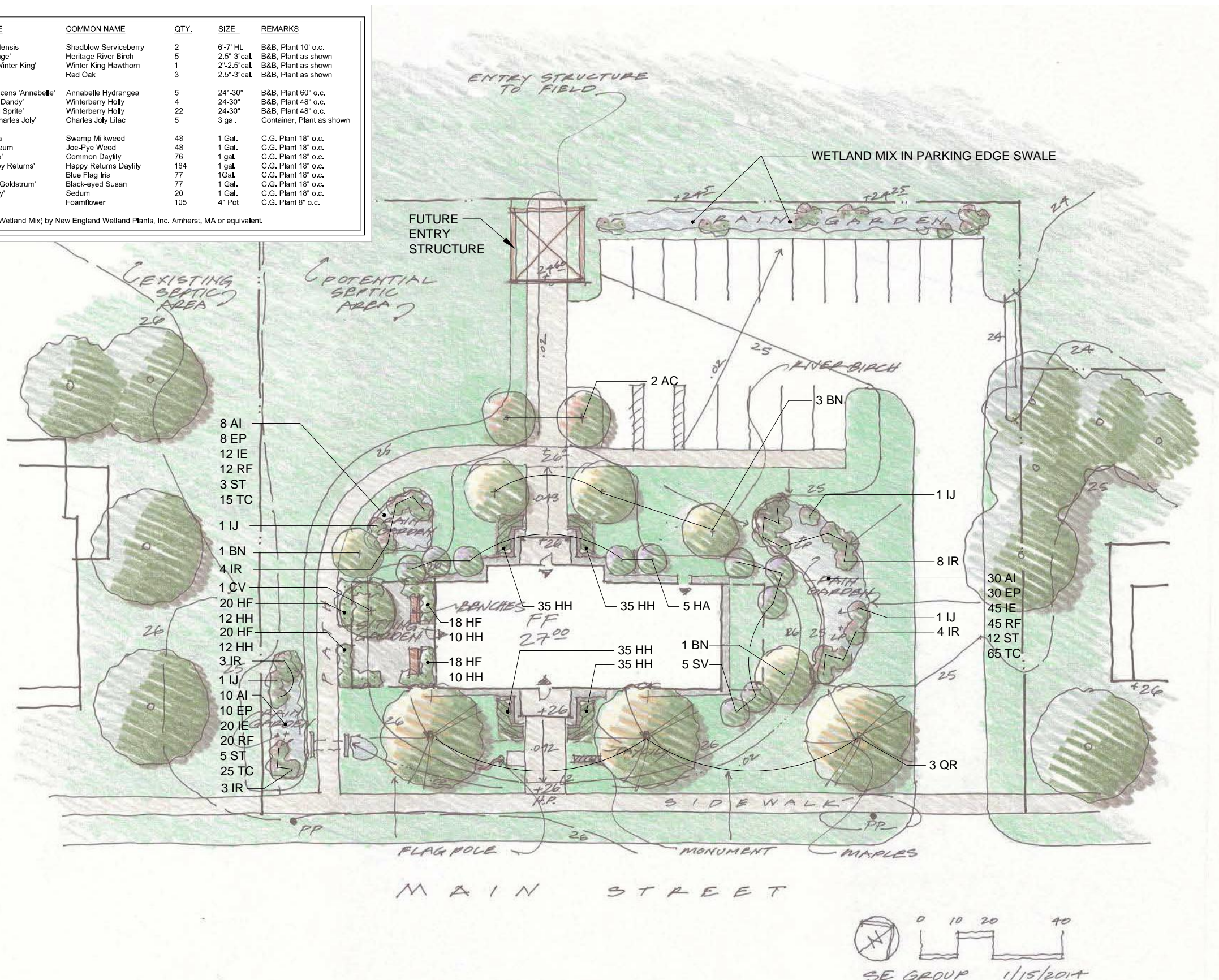


PLANT LIST

TYPE	KEY	BOTANICAL NAME	COMMON NAME	QTY.	SIZE	REMARKS	
TREES	AC	Amelanchier canadensis	Shadblow Serviceberry	2	6'-7' Ht.	B&B, Plant 10" o.c.	
	BN	Betula Nigra 'Heritage'	Heritage River Birch	5	2.5"-3" cal.	B&B, Plant as shown	
	CV	Crataegus viridis 'Winter King'	Winter King Hawthorn	1	2"-2.5" cal.	B&B, Plant as shown	
	QR	Quercus rubra	Red Oak	3	2.5"-3" cal.	B&B, Plant as shown	
SHRUBS	HA	Hydrangea arborescens 'Annabelle'	Annabelle Hydrangea	5	24"-30"	B&B, Plant 60" o.c.	
	IJ	Ilex verticillata 'Jim Dandy'	Winterberry Holly	4	24"-30"	B&B, Plant 48" o.c.	
	IR	Ilex verticillata 'Red Sprite'	Winterberry Holly	22	24"-30"	B&B, Plant 48" o.c.	
	SV	Syringa vulgaris 'Charles Joly'	Charles Joly Lilac	5	3 gal.	Container, Plant as shown	
	PERENNIALS	AI	Asclepias incarnata	Swamp Milkweed	48	1 Gal.	C.G. Plant 18" o.c.
EP		Eupatorium purpureum	Joe-Pye Weed	48	1 Gal.	C.G. Plant 18" o.c.	
HF		Hemerocallis 'Fulva'	Common Daylily	76	1 gal.	C.G. Plant 18" o.c.	
HH		Hemerocallis 'Happy Returns'	Happy Returns Daylily	184	1 gal.	C.G. Plant 18" o.c.	
IE		Iris versicolor	Blue Flag Iris	77	1Gal.	C.G. Plant 18" o.c.	
RF		Rudbeckia fulgida 'Goldstrum'	Black-eyed Susan	77	1 Gal.	C.G. Plant 18" o.c.	
ST		Sedum 'Autumn Joy'	Sedum	20	1 Gal.	C.G. Plant 18" o.c.	
TC		Tiarella cordifolia	Foamflower	105	4" Pot	C.G. Plant 8" o.c.	
WETLAND MIX			500sf of New England Wetmix (Wetland Mix) by New England Wetland Plants, Inc. Amherst, MA or equivalent.				



PLANTING PLAN

FEBRUARY 25, 2014



Waitsfield Town Offices  
Waitsfield, VT

SITE PLAN  
January 31, 2014  
MaclayArchitects